



Cadastral and Real Estate Advertising Office TULCEA  
Tulcea Real Estate Cadastre and Publicity Office

## EXTRACT OF THE LAND REGISTER CERTIFICATE FOR INFORMATION

Land Certificate No. 46000 Tulcea

Request no.	57063
Day	11
Month	05
Year	2023

Verification code  
100135116234



### A. A. Part I. Property description

land within the  
BUILT-UP AREA

**Address:** Loc. Tulcea, Str Progresului, Section 2, Jud. Tulcea Municipality

Item no.	Cadastral number Topographic	Surface* (sqm)	Observations / References
A1	46000	2,718	Unfenced land; Land delimited by concrete fence, metal fence, blind and limit the conventional. e e e wall d

### B. B. Part II. Owners and documents

Entries regarding property rights and other real rights		References
<b>85950 / 28/08/2020</b>		
Normative Act no. 143, dated 30/07/2020 issued by the Tulcea Local Council; Normative Act no. 133, from 30/10/2008 issued by the TULCEA LOCAL COUNCIL; Administrative Act no. 11262, dated 20/08/2020 issued by the TULCEA LOCAL COUNCIL; Normative Act no. 1360, from 27/12/2001 issued by the GOVERNMENT OF ROMANIA;		
B1	Tabulation, PROPERTY right, acquired by law, current share 1/1	A1
1) TULCEA MUNICIPALITY, CIF (Fiscal Identification Code): 4321429, public domain		

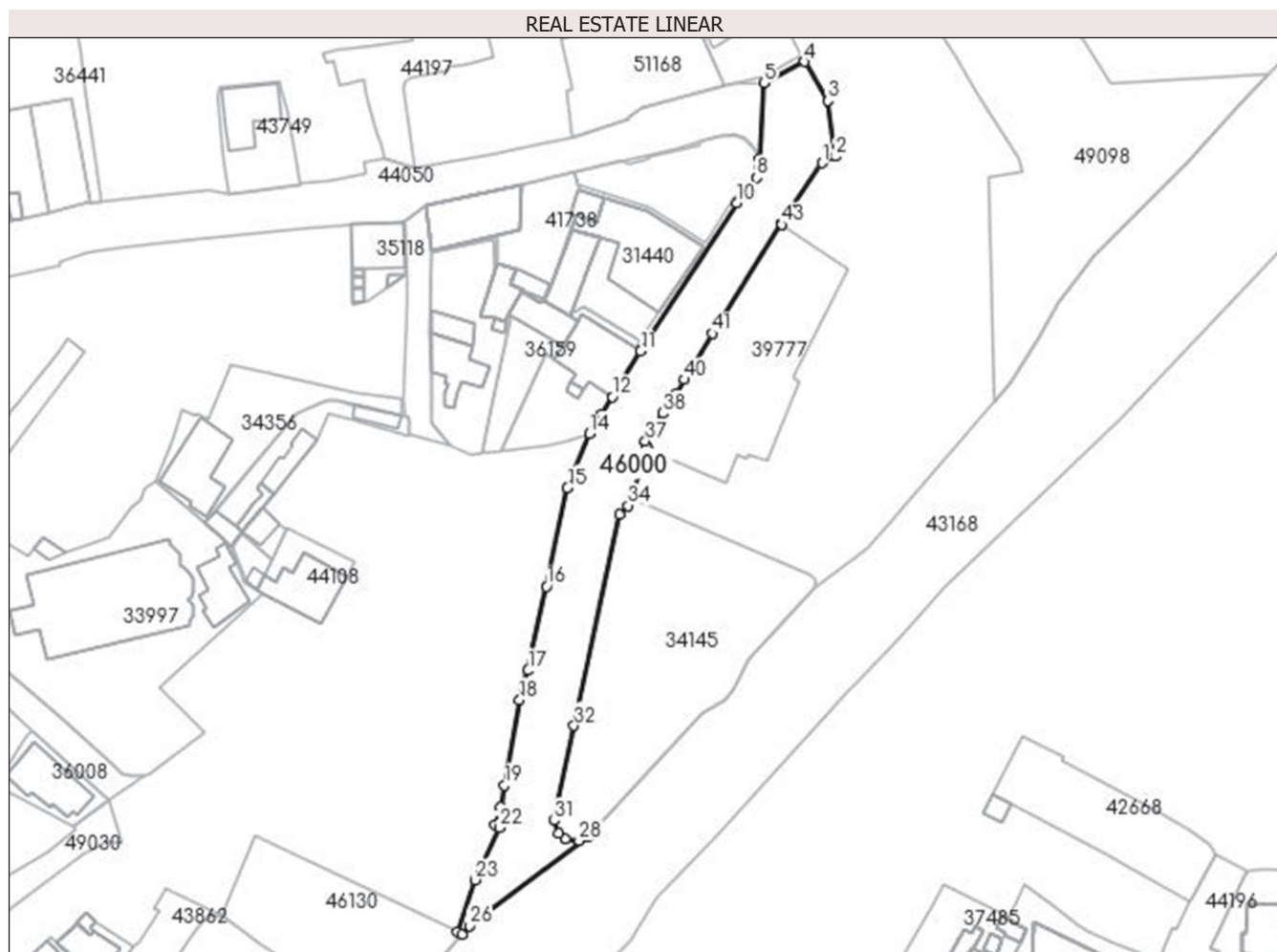
### C. B. Part III. ENCUMBRANCES.

Entries regarding dismemberment of property rights, real rights of guarantee and encumbrances	References
NOT EXISTING	

**Annex No. 1 to Part I****Land**

Cadastral no.	Surface (sqm)*	Observations / References
46000	2,718	Land delimited by concrete fence, metal fence, shield and conventional border.

\*The surface is determined in the Stereo 70 projection plane.

**Land related data**

Item no.	Usage category	Land within the built-up area	Surface (sqm)	Strip land	Lot	Topographic al no.	Observations / References
1	road	YES	2,718	-	-	-	

**Segments length**

1) The segment length values are obtained from the plan projection.

Start point	End point	Segment length	Start point	End point	Segment length	Start point	End point	Segment length
1	2	3,432	2	3	13,029	3	4	10,507
4	5	10,549	5	6	17,754	6	7	1,791
7	8	2,51	8	9	2,387	9	10	5,108
10	11	40,898	11	12	12,391	12	13	4,77
13	14	5,251	14	15	13,552	15	16	23,311
16	17	19,952	17	18	7,046	18	19	20,082
19	20	5,098	20	21	4,336	21	22	1,287
22	23	13,363	23	24	12,69	24	25	1,312

Start point	End point	Segment length
25	26	2,582
28	29	3,184
31	32	22,443
34	35	13,961
37	38	7,597
40	41	12.5
43	1	17,019

Start point	End point	Segment length
26	27	34,279
29	30	1,934
32	33	49,969
35	36	0,756
38	39	5,347
41	42	29,913

Start point	End point	Segment length
27	28	2,266
30	31	3,179
33	34	2,933
36	37	1,059
39	40	3,915
42	43	0,273

**\*\* Segment lengths are determined in the Stereo 70 projection plane and are rounded to 1 millimeter.**

**\*\*\* The distance between the points is made up of cumulative segments that are smaller than the value of 1 millimeter.**

The Land Register extract generated by the integrated IT system of ANCPI contains the information from the land book active on the date of generation. This is valid under the conditions provided by art. 7 of Law no. 455/2001, in conjunction with art. 3 of the O.U.G. no. 41/2016, exclusively in the electronic environment, for activities and administrative processes provided by the legislation in force. The validity can also be extended in the physical form of the document, without the holographic signature, with the express or procedural acceptance of the public institution or entity that requested the presentation of this extract.

Verification of the correctness and reality of the information contained in the document can be done at the address

**www.ancpi.ro/verificare**, using the online verification code available in the header. The verification code is valid for 30 calendar days from the moment the document is generated.

**Date and time of generation,**

11/05/2023, 11:57